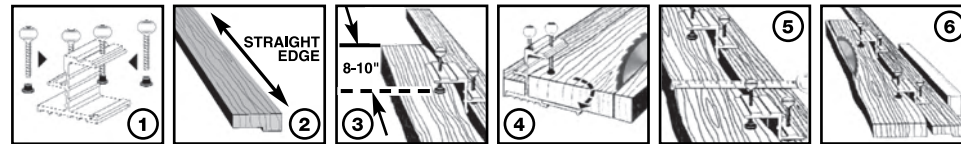


GENERAL
Pro TRU-EDGER™
JOINTER CLAMP KIT
INSTRUCTIONS FOR USE



To Assemble the Jointer Clamps:

1. Install all 4 thumb screws into the threaded holes on the two jointer clamps and put a pad on each screw (FIGURE 1).
2. Select a straight board to use as your straight edge. The board should be at least as long as the stock you are straightening or jointing.
 (OPTIONAL: Cut a 9/32 x 1-1/2 inch rabbet in your straight edge to receive the short end of the clamps (FIGURE 2). This allows both the straight edge and the clamps to rest on the same surface).

To use your Jointer Clamps:

1. Clamp your jointer clamps and straight edge to your stock.
 (NOTE: Arrange clamps on the straight edge so they are 8 to 10 inches from the ends of the stock to be cut (FIGURE 3)).
2. Adjust your jointer clamps to optimize the stock.
 - A. Determine the minimum width of your stock by measuring from the rip fence to left edge of stock in several places.
 - B. Set the table saw fence to slightly less than the smallest measurement taken (FIGURE 5). (Remember you can always re-cut if you do not clean the entire edge).
3. If the stock is wider than 2", you may use the swing arm to support the part of the stock overhanging the edge of the clamp (FIGURE 4).
IMPORTANT - Be sure that the arm does not extend into the blade path.
4. To cut: Pass your straight edge, with stock attached, through the table saw. Now you have a new true edge on the straight cut side of the stock (FIGURE 6).
5. If your cut edge does not 'clean up', adjust your fence slightly closer to the blade and re-cut.
6. To cut opposite side: Unclamp stock from jointer clamps, and use new straight edge against the rip fence.

Patent #7,000,519

Made in China / Hecho en China / Fabriqué en Chine

©2009 GENERAL TOOLS & INSTRUMENTS
 80 White Street New York, NY 10013-3567
 e-mail: sales@generaltools.com • www.generaltools.com

GENERAL
INSTRUCTIONS FOR USE

